

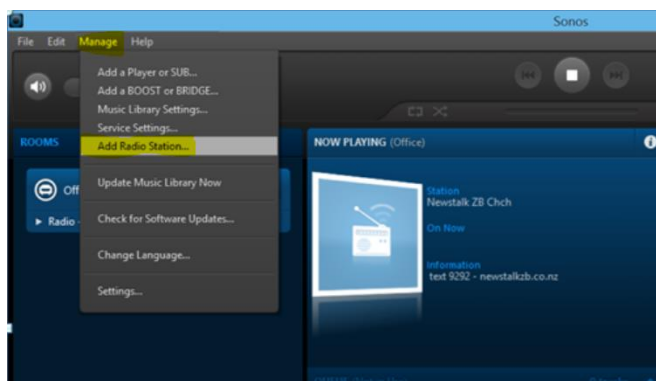
ADDING INTERNET RADIO STATIONS MANUALLY TO SONOS

https://sonos.custhelp.com/app/answers/detail/a_id/264/~/-/adding-internet-radio-stations-manually-to-sonos

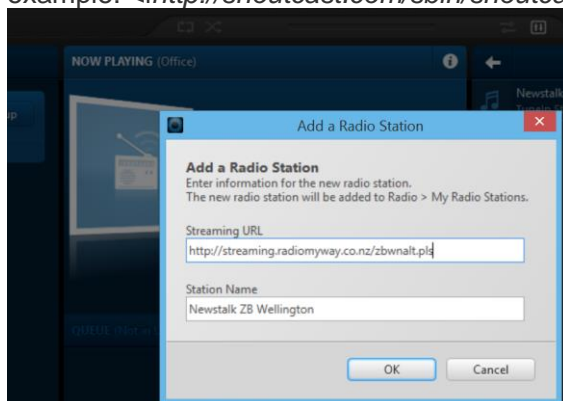
- Sonos currently supports **MP3**, **AAC** and **WMA** streaming audio formats.
- The Sonos Radio guide is powered by TuneIn.
- NZME.Radio stations are all hosted on iHeartRadio and not available on TuneIn.

You can use the Sonos Controller for Mac or PC to add a radio station that does not appear in the radio guide. You must know the streaming URL, and the station must use the streaming MP3 broadcast format. This station will be added to your Favorites list.

1. From the **Manage** menu, select **Add Radio Station**.

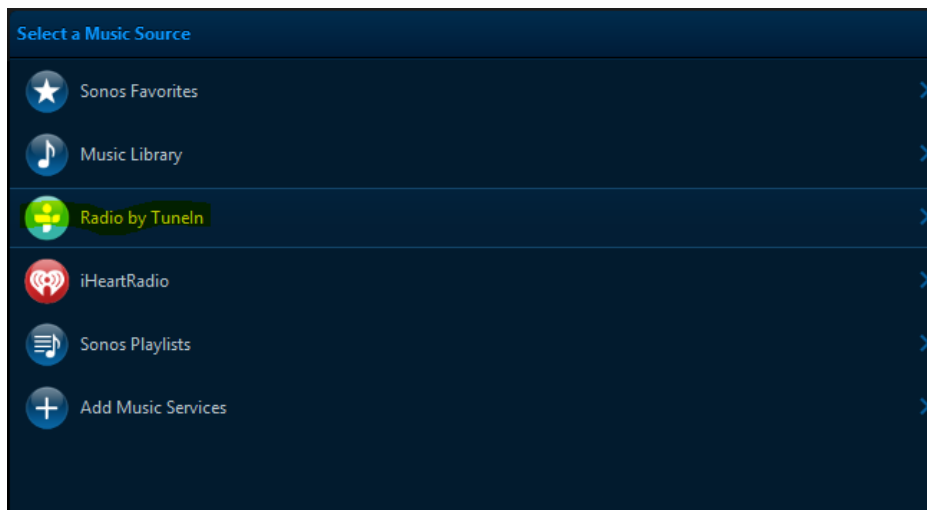


2. Type the streaming URL for the radio station you want to add to your station list (for example: `<i>http://shoutcast.com/sbin/shoutcast-playlists.pls?rn=8107&file=filename.pls</i>`).

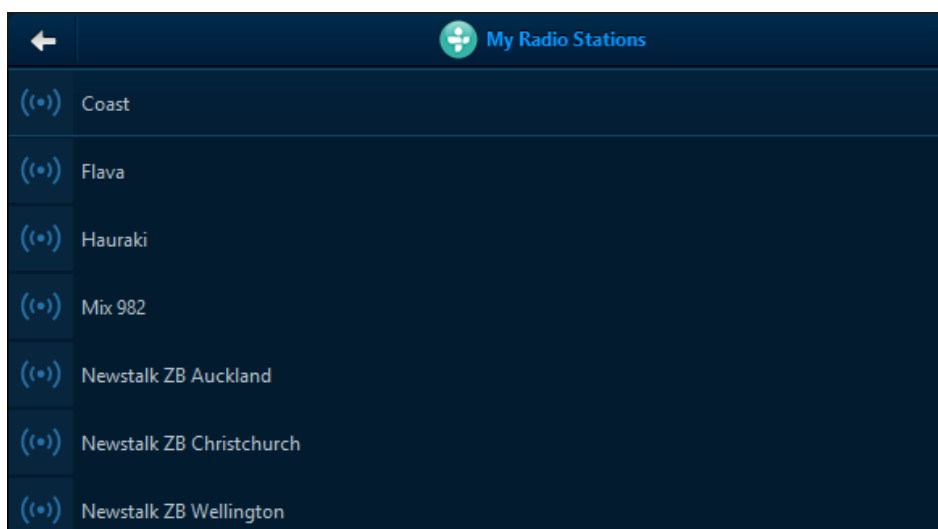
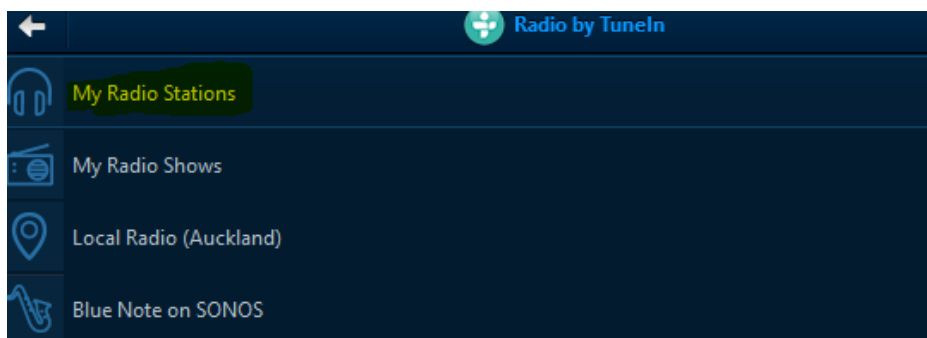


3. Type the radio station's name in the **Station Name** field, and then click **OK**.

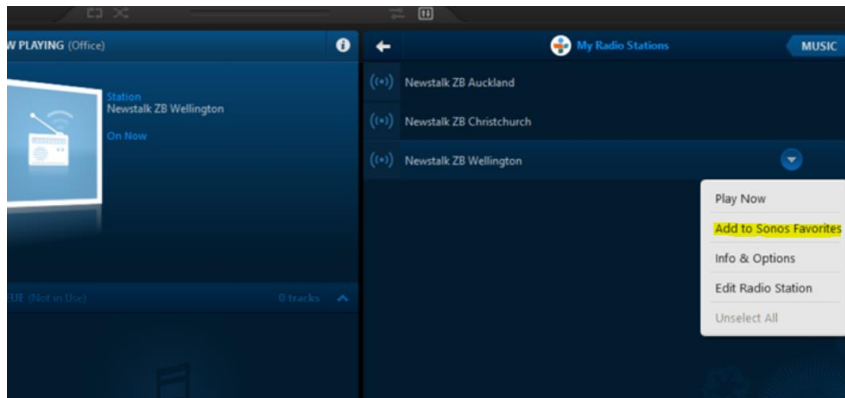
The new radio station appears in **Radio by Tunein -> My Radio Stations** list.



in *Radio by Tunein* -> *My Radio Stations* list



4. To add station to **SONOS favorites**, right click on the Radio Station and select **Add to SONOS favorites**



NOTE: Sonos apps - <http://www.sonos.com/en-wo/app>